



# ISOSCELES INVESTMENTS

Mining | Exploration | Consultancy | Sourcing | Energy

company profile



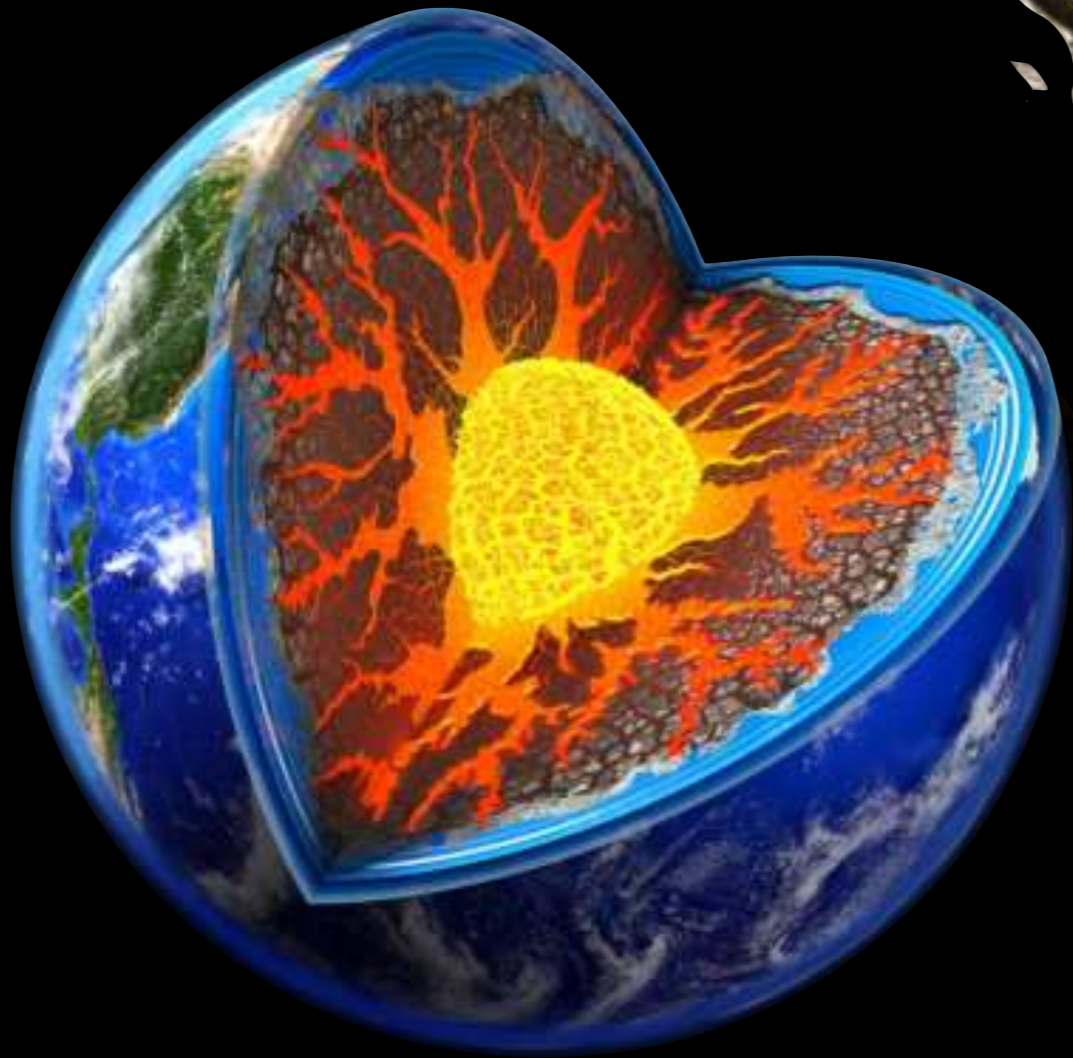




Chrome Mining



OVERVIEW



“mining and mineral  
exploration”



## Overview

Isosceles Investments is a dynamic and innovative mining, energy and sourcing investment firm dedicated to the sustainable extraction and supply of essential minerals critical to global industries.

Our core operations focus on the mining and production of lithium, chrome, copper, tantalite, coal, beryllium and gold, alongside other vital base materials.

With a strong commitment to responsible mining practices, we aim to contribute to the world's growing demand for high-quality raw materials while upholding environmental stewardship and ethical standards.

As a mining and energy resource development company, Isosceles Investments also participates in consultancy, exploration, resource sourcing, procurement, build and capacitate projects. Our focus in this sector is on rapid advancement of high quality brownfield projects. We also take a look at greenfield projects after a careful due diligence exercise.

Our mission is to be a leader in the mining industry by driving innovation, efficiency, and sustainability in every aspect of our operations. We envision a future where our responsibly sourced materials empower industries to thrive while preserving the planet for future generations.

At Isosceles Investments, sustainability is at the heart of our operations. We prioritise eco-friendly mining techniques, land rehabilitation, and transparent community engagement. Our practices align with global environmental and social governance (ESG) standards to minimise ecological impact and maximise socio-economic benefits.

With operations and partnerships across key mining regions, we ensure a consistent supply of high-quality materials to our clients worldwide, supporting industries ranging from technology and manufacturing to construction and energy.

We are committed to harnessing the latest technologies and best practices to enhance efficiency, safety, and environmental care in our mining and energy processes. Our skilled team of professionals brings expertise and passion to every project, ensuring operational excellence.

By choosing Isosceles Investments, you join a trusted partner committed to delivering reliable, responsibly sourced materials essential for building a sustainable and prosperous future.

overview



About us

“unlocking your greatest  
potential”



## Chief Executive Officer

Opening statement

*"We are experts in challenging environments and work with the mining and production sectors to discover more efficient mining techniques, uncover untapped economic potential, and generate goods."*

Specialising in challenging environments, Isosceles Investments was founded to assist the mining and energy industry sectors in discovering more efficient ways to mine, uncover untapped economic potential, and generate commodities. Our services enable these sectors to assess prospects, address latent productivity issues, and enhance performance in every cycle. For problems pertaining to mining, Isosceles Investments offers top-notch expert assistance, ranging from geotechnical audits, feasibility studies, extraction of minerals to sourcing and supplying through various partnerships.

We are driven by a steadfast commitment to unlocking the potential of critical minerals essential for powering the future. As global demand for lithium, chrome, copper, tantalite, coal, beryllium and gold, alongside other vital base materials surges, our mission is to lead responsibly in mining exploration and sourcing, ensuring we contribute to sustainable progress while delivering value to our stakeholders.

Our work is not just about extracting resources—it's about creating a positive impact. We are dedicated to fostering innovation, embracing cutting-edge technologies, and adopting best practices that minimise environmental footprints while maximising efficiency and safety. We recognise that our operations play a pivotal role in the transition to a cleaner and greener world, and we are proud to be part of the solution.

Sustainability is at the heart of everything we do. By prioritising ethical sourcing, engaging with local communities, and upholding the highest standards of governance, we aim to build long-term partnerships that benefit all our stakeholders. From powering electric vehicles with lithium to enhancing infrastructure with chrome, the resources we mine are foundational to advancing global development.

As we explore new opportunities and expand our operations, we remain guided by our core values: innovation, responsibility, and excellence. Together with our talented team, partners, and investors, we are confident in our ability to meet the challenges of today and shape the future of tomorrow.

Thank you for your continued support and belief in our vision.

Sincerely,

*E. Mawoni*

**Eusorf Mawoni**

Chief Executive Officer

## About us

### Vision

To be a global leader in lithium mining, sustainable base minerals sourcing and energy solutions, driving innovation and fostering a greener planet.

### Mission

- To responsibly source, process, and supply premium lithium, chrome, and base minerals to power the world's industries.
- To champion environmental sustainability, operational excellence, and stakeholder value in every aspect of our business.
- To empower communities and industries with cutting-edge energy solutions that contribute to a net-zero future.

### Philosophy

Our philosophy is grounded in the belief that natural resources, when responsibly managed, can transform societies and economies while preserving the planet for future generations. We strive to balance economic growth with environmental and social responsibility, ensuring sustainable progress for all.

### Values

- **Sustainability:** We prioritise environmental stewardship, ensuring our operations align with global best practices for ecological preservation.
- **Integrity:** Honesty, transparency, and ethical practices are the foundation of our business.
- **Innovation:** We continuously adapt and innovate to meet evolving industry needs and challenges.
- **Safety:** The health and safety of our employees, partners, and communities are paramount.
- **Collaboration:** We believe in building strong relationships with stakeholders for mutual growth and success.

### Objective

Our mission is to responsibly and sustainably unlock the potential of the earth's critical resources, focusing on lithium and chrome mining, exploration, and mineral sourcing to fuel global energy transformation and industrial innovation. We aim to deliver high-quality minerals and energy solutions that power industries and contribute to a cleaner, more sustainable future.

### Corporate Culture

At Isosceles Investments, we are driven by a culture of excellence, integrity, and sustainability. We believe in fostering collaboration, innovation and accountability across all levels of our operations. Our team is united by a shared commitment to:

**Environmental Responsibility:** Minimising our ecological footprint and advancing green technologies.

**Safety First:** Ensuring the highest standards of workplace safety for our people and communities.

**Stakeholder Value:** Creating long-term benefits for our employees, partners, and the regions where we operate.

**Diversity & Inclusion:** Promoting a workplace that values diverse perspectives and empowers individuals to thrive.

## Industry Practices

Isosceles Investments operates at the forefront of the mining industry, specialising in the extraction and sourcing of critical minerals, including lithium, chrome, and other base minerals essential for global industrial and technological advancements. Guided by a commitment to sustainability, innovation, and operational excellence, we have established ourselves as a trusted partner in the mining and resource sector.

The company employs state-of-the-art mining technologies to ensure efficient and responsible extraction processes. From exploration to production, we adhere to stringent environmental and safety standards, minimising ecological impact while maximising resource recovery. Our operations are designed to align with international best practices, focusing on reducing emissions, water usage, and waste generation, while promoting biodiversity in mining regions.

A key pillar of our approach is fostering strong relationships with local communities. We prioritise ethical practices by investing in community development, creating employment opportunities, and respecting indigenous rights. Transparency and accountability remain integral to our operations, ensuring we build long-term trust with stakeholders, customers, and regulatory bodies. In addition to mining, our company is dedicated to sourcing and supplying high-quality minerals to global markets.

By maintaining robust supply chain networks and partnerships, we ensure the reliable and timely delivery of materials critical to industries such as energy storage, automotive manufacturing, construction, and technology. Through continuous investment in research and development, we strive to innovate processes that enhance mineral recovery rates and explore alternative uses for mining by-products. This commitment positions us as a leader in sustainable mineral resource management, contributing to the global transition towards renewable energy and green technologies.

Our company's vision is to play a pivotal role in the future of mining by combining economic growth with environmental stewardship and social responsibility, driving progress for industries and communities worldwide. The global demand for critical minerals such as lithium and chrome continues to grow, driven by their indispensable role in renewable energy, electric vehicles, advanced manufacturing, and infrastructure development. Recognising these trends, our company is dedicated to maintaining a strategic focus on innovation and adaptability. By aligning our operations with evolving market demands, we ensure that our products meet the highest quality standards, enabling our clients to thrive in competitive and dynamic industries.

Our exploration and development projects are backed by cutting-edge geotechnical and geological expertise, ensuring that we unlock the maximum potential of mineral deposits. By integrating advanced data analytics and geospatial technologies, we optimise site selection, resource management, and extraction processes. This approach not only enhances our operational efficiency but also reinforces our commitment to sustainable and responsible mining practices that safeguard natural ecosystems.

As we continue to expand our global footprint, our company remains committed to advancing environmental, social, and governance (ESG) goals across all facets of our business. We actively contribute to international efforts to reduce carbon footprints by participating in initiatives aimed at decarbonising the mining sector. Our partnerships with industry leaders, research institutions, and policymakers drive collaborative solutions that balance economic progress with environmental conservation, ensuring a sustainable future for generations to come.



Lithium Mining and Crushing



Chrome Mining

## Industry Expertise

With decades of combined experience in mining and mineral sourcing, our company has cultivated unparalleled expertise in the extraction, processing, and global distribution of critical minerals, including lithium, chrome, and other essential base minerals. Our proficiency spans the entire value chain, from advanced geological exploration and resource assessment to the efficient delivery of premium-grade materials to industries worldwide. This comprehensive knowledge positions us as a trusted leader in the field, driving progress in sectors that rely on our expertise.

We have a deep understanding of the complex geological formations that house these vital resources, supported by a team of highly skilled geologists, engineers, and mining specialists. By leveraging advanced exploration techniques and innovative mining technologies, we can unlock the potential of mineral deposits while adhering to rigorous environmental and safety standards. Our expertise in refining and processing ensures that the minerals we produce meet or exceed global quality benchmarks, making them integral to cutting-edge industries such as renewable energy, automotive manufacturing, and construction.

Our mastery extends beyond technical operations to include a nuanced comprehension of market dynamics and supply chain management. We are adept at navigating the challenges of fluctuating demand, international trade regulations, and evolving customer needs. Through strategic partnerships and an extensive distribution network, we provide reliable, timely access to the materials that power modern economies.

In an industry defined by innovation and sustainability, our company stays ahead of the curve by continuously enhancing our capabilities. We invest in research and development to explore new methods for resource extraction, improved material efficiency, and applications for mining by-products. Our commitment to staying at the forefront of industry advancements ensures we deliver exceptional value to our clients while contributing meaningfully to the transition toward greener technologies and a more sustainable future.

Our expertise is further amplified by our commitment to integrating sustainability into every aspect of our operations. Understanding the environmental challenges associated with mining, we have implemented innovative practices that reduce waste, conserve water, and lower carbon emissions. By adopting cutting-edge technologies, such as precision mining and renewable energy integration at our sites, we minimise our ecological footprint while optimising productivity and profitability.

## .....industry expertise

In addition to technical and operational expertise, we have a strong focus on regulatory compliance and ethical sourcing. Operating across multiple jurisdictions, we navigate diverse legal frameworks with precision, ensuring that every aspect of our business adheres to international and local standards.

Our ethical sourcing practices are rooted in transparency, accountability, and the promotion of fair labor practices, ensuring that our operations benefit all stakeholders involved. This dedication to responsible mining has earned us recognition as a trusted partner in global supply chains.

Our knowledge of market trends and emerging technologies enables us to anticipate shifts in the industry and adapt swiftly. Whether addressing the increasing demand for lithium in battery technologies or supporting the construction industry's need for chrome, we deliver solutions that align with our clients' strategic objectives. By combining technical acumen, market insight, and a commitment to sustainability, we have positioned ourselves not just as a supplier of raw materials, but as a partner in driving innovation and progress for industries around the globe.



### Corporate Governance

Our company's corporate governance framework is built on a foundation of integrity, accountability, and transparency, ensuring that our operations align with the highest ethical standards. As a leader in the mining and mineral sourcing industry, we recognise the critical role governance plays in managing risks, maintaining stakeholder trust, and fostering long-term success. Our governance practices are designed to uphold the principles of fairness, responsibility, and respect for all our stakeholders, including employees, investors, customers, and the communities in which we operate.

The company is governed by a skilled and diverse board of directors, whose collective expertise spans mining, sustainability, finance, and corporate law. The board provides strategic direction while ensuring robust oversight of operational and financial performance, regulatory compliance, and risk management. Guided by clear policies and procedures, the board fosters a culture of accountability and encourages open communication across all levels of the organisation. This governance approach enables us to remain agile and resilient in a dynamic industry landscape.

We are committed to maintaining the highest standards of transparency in all our dealings. This commitment is reflected in our comprehensive reporting practices, which provide stakeholders with accurate, timely, and accessible information about our financial performance, operational activities, and sustainability efforts. By adhering to globally recognised standards, such as the International Financial Reporting Standards (IFRS) and environmental, social, and governance (ESG) benchmarks, we ensure that our practices contribute to the long-term value creation and ethical growth of our business.

Furthermore, our governance framework emphasises the importance of ethical decision-making and the integration of ESG principles into every facet of our operations. We actively engage with stakeholders to address their concerns and priorities, fostering collaboration and shared value creation. Through rigorous oversight, transparent reporting, and a steadfast commitment to ethical conduct, we aim to set a benchmark for corporate governance excellence in the mining and mineral sourcing industry.

Our governance practices are deeply intertwined with our commitment to sustainability, inclusivity, and ethical resource management. As a company operating in regions with diverse cultural, social, and environmental contexts, we prioritise meaningful engagement with local communities and other stakeholders. This ensures that our decisions reflect a balance between economic goals and the long-term well-being of the environments and societies impacted by our operations. Our governance framework promotes regular dialogue, fostering trust and mutual respect while addressing the unique challenges and opportunities of each region.

Risk management is a cornerstone of our corporate governance strategy. The dynamic nature of the mining and mineral sourcing industry requires a proactive approach to identifying, assessing, and mitigating risks across environmental, financial, and operational dimensions. Our risk management committee works closely with our board of directors to evaluate emerging challenges, including market volatility, regulatory changes, and geopolitical factors. By incorporating robust contingency planning and advanced analytics, we ensure that our business remains resilient and adaptable in an ever-changing landscape.

Our governance ethos also extends to fostering a culture of innovation and continuous improvement. We encourage collaboration across departments and among external partners, ensuring that new ideas and technologies are integrated seamlessly into our operations. This commitment to innovation not only enhances our productivity and efficiency but also strengthens our ability to deliver sustainable solutions for our customers and stakeholders. By prioritising responsible governance, we aim to lead the mining and sourcing industry into a future defined by transparency, integrity, and shared success.



## Governance

### **Governance**

Isosceles Investments concurs that governance encompasses systems and procedures intended to guarantee responsibility, openness, promptness, legality, stability, parity and inclusivity, empowerment, and wide-ranging involvement. Accordingly, governance refers to the framework that governs an organisation's operations and control as well as the procedures that hold both the organisation and its members accountable. The components of governance include administration, compliance, ethics, and risk management.




### **Compliance and Authorisation**

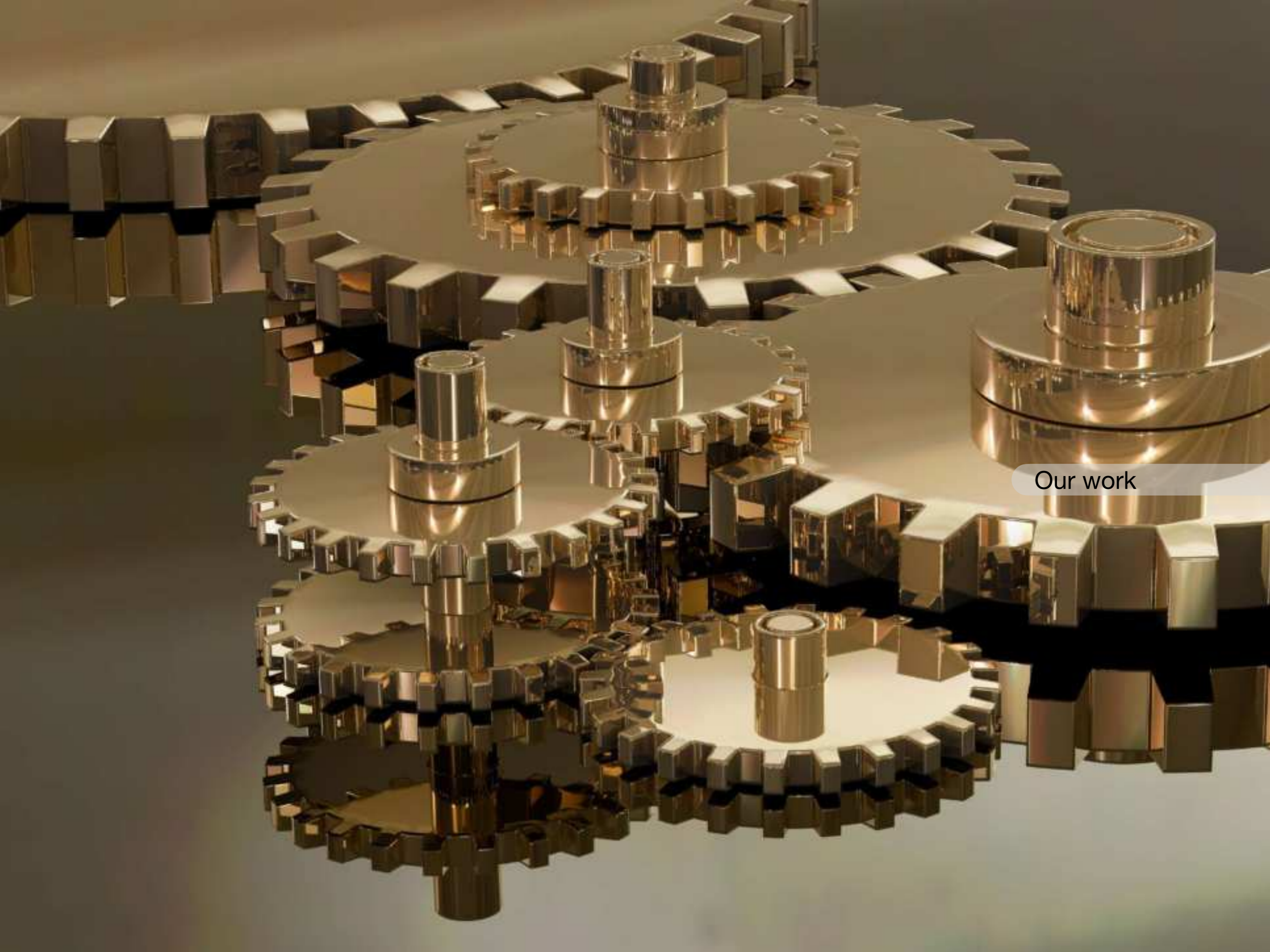
We do not work outside the confinements of the law. We make sure that our clients understand compliance regulations and abide by the statutes that regulate them.

### **Health and Safety**

We strive to provide and maintain a workplace free of safety and health hazards. We want to work with clients that understand the regulations on health and safety for that we don't put the lives of staff in danger. We continuously monitor and improve our procedures and programmes so that we maintain a safe, secure and healthy working environment. Isosceles Investments upholds the health and safety standards as of the Industries it operates in.



Corporate Governance



Our work



3

Li

Lithium

6.941



## Mining Exploration & Sourcing

“we conduct mine planning, engineering studies, evaluation and audits before embarking on a consulting exercise and or extractions.”



## Lithium Mining

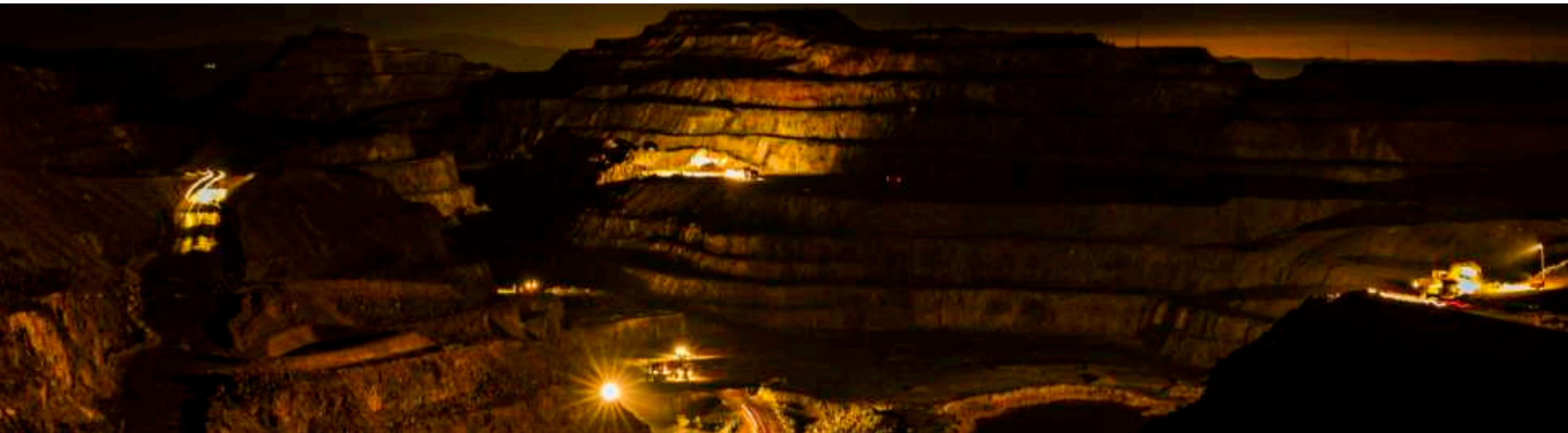
### **Mining Activities Work**

Isosceles Investments Associate and Network geologists and mining engineers conduct mine planning, engineering studies, evaluation and audits before embarking on a consulting or exploration exercise. We provide specialist services for both surface and underground rock engineering including stability and stress analysis investigations.

### **Mineral Exploration**

**The exploration services we provide include:**

- Project Evaluations
- Minerals Mining and Sourcing
- Mineral Explorations
- Mineral System Modelling
- Field Mapping and Analysis
- Geochemistry
- Exploration Project Management Audits
- Exploration Strategy and Governmental Advice



Chrome Mining



## Our Competitive Advantage

We have a globally approach and this we implement with business owners, investors, and financial institutions providing them advice and support.

### Our work includes:

- Mineral Analysis
- Mineral Sourcing
- Mineral Mining & Exploration
- Global Market Studies
- Logistics and Operations Partnerships
- Capital Cost Estimates
- Mining Project Valuations
- Environmental and Regulatory Compliance

## Market Studies

We take business growth very seriously. An analysis of the market is an important component of business strategy. A market analysis provides a good perspective of the challenges, prospects and competitive activities that you could be facing. Isosceles Investments has conducted Market Studies for Greenfield projects, operational and capital cost estimates. We have also done market studies for Brownfield projects in the mining and production industry.

We also offer services in:

- Strategy Consulting
- Management Consulting
- Human Resources Consulting

## Our services:

- Feasibility
- Due Diligence
- Valuations
- Plant Maintenance & Reliability Audits
- Plant Efficiency Studies
- Minerals Exploration & Reserves Evaluation
- Market Studies





## Valuations

Isosceles Investments's comprehensive valuations take into consideration market trends, mining and production methods, maintenance and reliability and evaluation of future projections. We generate a fair valuation in the shortest time period possible. We are experienced in utilising several appraisal methods depending on the need of our clients, such as valuations based on:

- Replacement cost approach
- Present value of discounted cash flows
- Comparable recent acquisitions

The valuation must take into consideration market growth and stability, equipment and raw materials, building and facilities and liabilities.

## Feasibility Study

We believe that the experience we have had makes us an excellent mining and exploration consultancy firm. We will assist you in project development that will get you the right funding for any project you want to embark on. There is no invest that will come without a careful feasibility study. Picking the right company to do it will not only save you money on costs but will save you time as well.

Isosceles Investments applies an economic model that is bankable. Our Feasibility reports provide professional financial projections and address the needs of investors and lenders. This preliminary work will be the most valuable to determine whether to proceed with the project or not.



## Due Diligence

Isosceles Investments provides business and technical reviews advice to mitigate potential risk on losses for projects to be embarked on. We identify and assess elements which could affect the future operation of a processing plant or mine from a technical, environmental, economic, and social viewpoint.

**Our Due Diligence scope covers the following:**

- Environmental Concerns and social impacts
- Analysis Report
- Market Evaluation
- Waste Management Practices
- Business activities
- Products and Resources



## Environmental Services

- \* Environmental Impact Assessment (EIAs)
- \* Environmental Management Plans (EMPs)
- \* Hydrogeology (surface and underground water monitoring) Environmental Auditing
- \* Contaminated Site Management
- \* Chemical Spillage Emergency Response and Clean up Environmental Management Systems
- \* Environmental Designs
- \* Air Emissions Surveys
- \* Social Impacts Assessments
- \* Social Environmental Valuations and Resettlement Action Plans (RAPs)
- \* Water and Sanitation



## Mining Division

- \* Mine pegging,
- \* Geological Surveys
- \* Siting of Works Plans
- \* Mining Rights Registrations
- \* Mine closure planning & cost assessments



## SHEQ Division

- \* SHE Training
- \* SHE Management Systems (Development and Auditing)
- \* Compliance Auditing
- \* Quality Management Systems (Development and Auditing)
- \* Supply and Safety Clothing



## Project Management

- \* Site Suitability Assessments
- \* Landscaping
- \* Construction Project Management
- \* Minerals Sourcing process & Delivery





## Environmental Consultancy

“our framework integrates environmental management and stakeholder engagement.”



### **Environment**

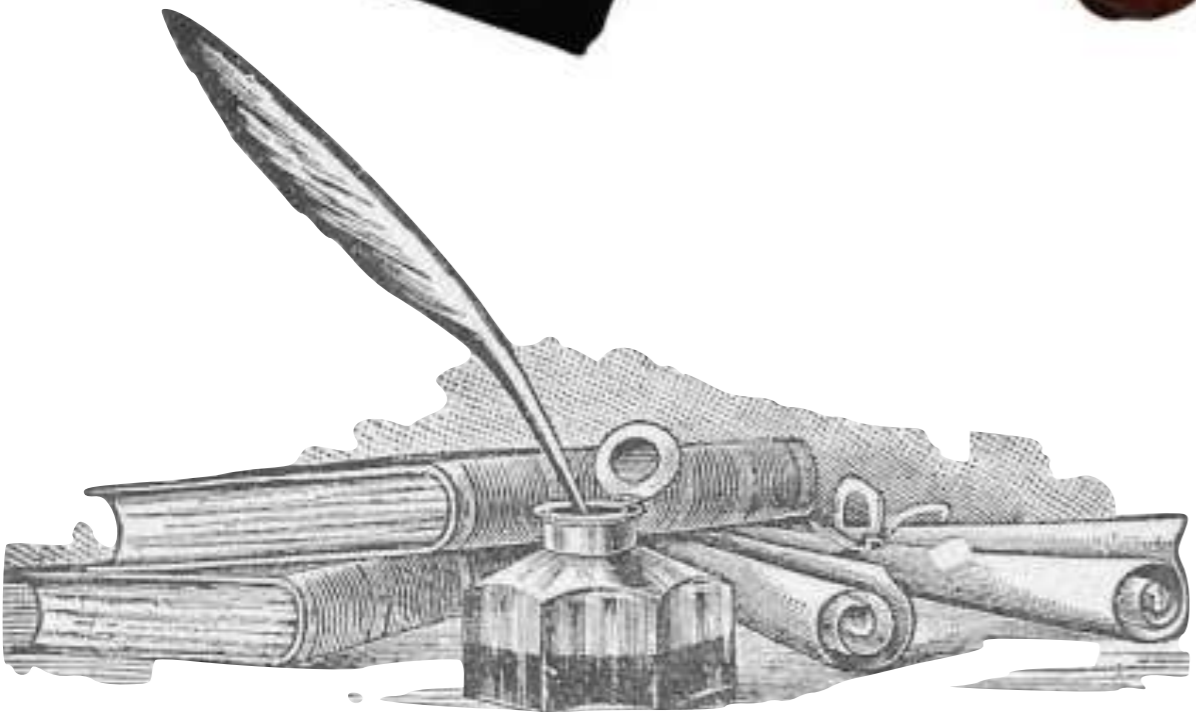
Our consultancy services range from environmental and social assessment issues to independent due diligence reviews, compliance and governance systems to management planning, and audits. The Isosceles Investments framework integrates environmental management and stakeholder engagement. We also apply the knowledge of assessment processes, management practices, and legislation.

### **Climate Change**

We help clients develop and implement climate change strategies. The application of interdisciplinary environmental and social sciences expertise, has helped our clients use the right formulas to preserve and protect the environment in which they work. Isosceles Investments helps clients make informed decisions on mitigating and developing adaptation responses to their operations. Our managing, analysing, and interpretation of data along with our skills and expertise in technology enables us to produce accurate, up to date analysis that yield meaningful results.



# Terms of Business





**Creating Partnerships**  
“Creating synergies that deliver measurable  
results”

# We Create Partnerships

## **Core Values**

This is the single most crucial element in any intimate partnership. Discovering a business partner who shares your values and adheres to the same standards will be crucial at every turning point.

## **Long-term Shared Purpose**

What is the reason for your actions? To what destination are you heading? Partners ought to have similar future goals for the company's growth and the influence they will have.

## **Complementary Strengths**

Differently skilled leaders make for the best relationships. There is no need for another you. If one partner is the primary strategist and has a broad perspective, the other partner should preferably be strong at operations and implementation. Rather than just adding bandwidth, your partner should help you fill in the blanks.

## **Proactive, Intentional Communication**

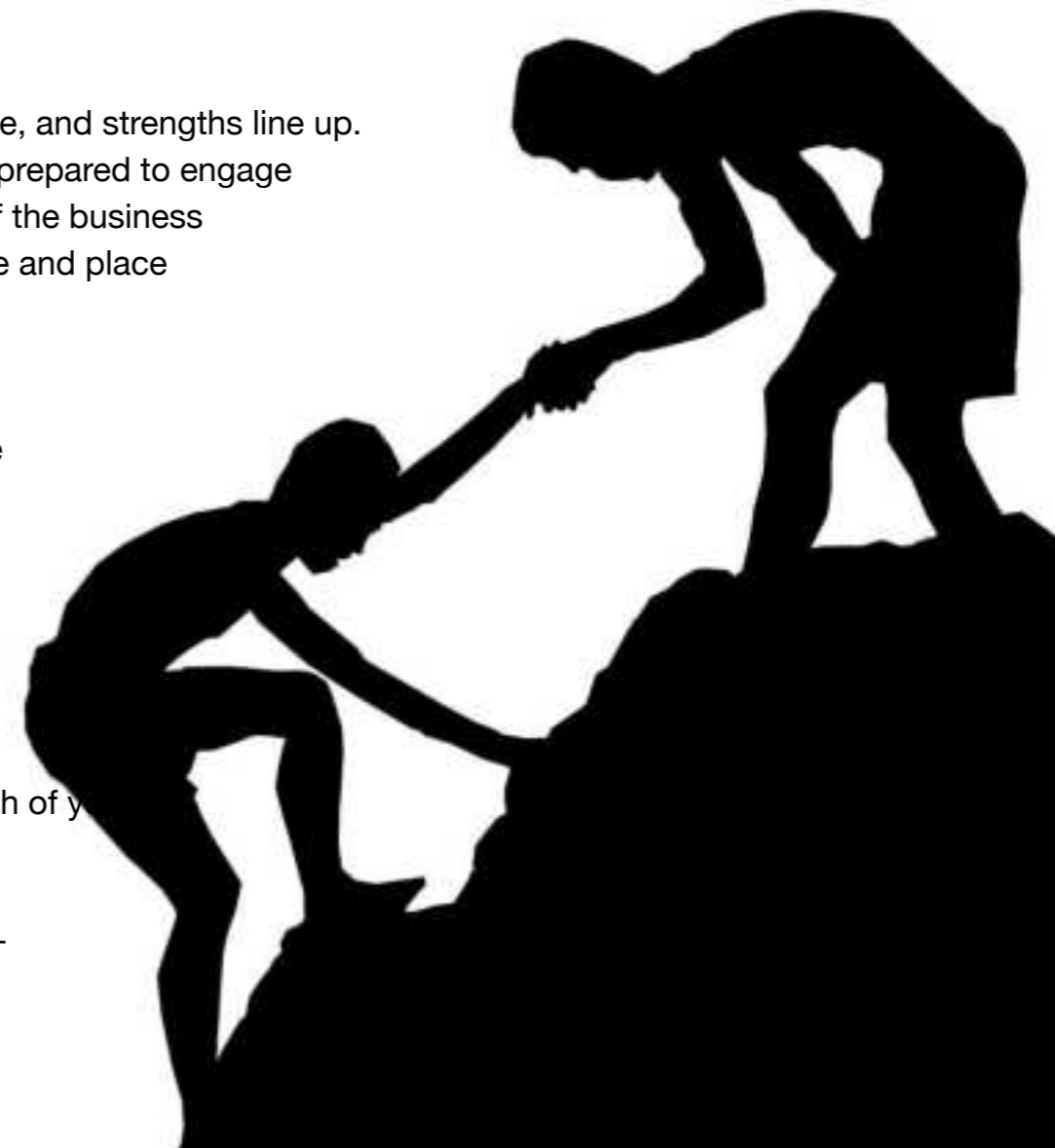
If you don't prioritise communication, your partnership will suffer even if your beliefs, purpose, and strengths line up. Any topic pertaining to business must be discussed with ease by partners. They have to be prepared to engage in challenging dialogue. In addition to the discussions that inevitably arise over the course of the business day, they should preferably hold weekly standing calls or meetings. This gives a specific time and place to talk about any subjects that might be missed.

## **Scheduled Strategic Planning**

Partners will gain from organising strategic planning sessions every 6–8 weeks to assess the business progress against well-defined goals, in addition to weekly calls. A facilitator is not necessary. This is merely a block of time (four to six hours) to take stock of the business's accomplishments, talk about possible directional changes, and establish short-term goals that feed into long-term objectives.

## **Legal Documents**

Get a partnership agreement if you plan to work together to safeguard the company and both of you. Though it rarely happens, relationships can fail.





## Why Isosceles Investments

We work with clients on strategic issues, providing advice in a range of technical fields. Our capability includes design and engineering solutions as well as resource management and monitoring. We also assist clients with processes, priorities, and documentation related to compliance and authorisations. This is why you should hire Isosceles Investments for all your consultancy services. Our experience and professionalism are unmatched.

**We offer:**

- Competitive Pricing
- Unmatched Expertise
- Extensive Network

### Strategy and Advice

We advise and give assistance by providing solutions that work. Sustainable strategies based on global best practices.

### Studies and Audits

We provide a seamless approach for due diligence, feasibility studies solving not just problems but providing solutions to unseen challenges.

### Resources and Monitoring

The Isosceles Investments team works with clients to design innovative solutions that are fit-for-purpose. Our work is measured and evaluated. We carry on our work assisting the client at every stage to make sure that we get the best results all the way.



Consulting

# Our Corporate Social Responsibility

“Our strength is driven on the foundation of building people.  
We are people centric and life come first.”



**ISOSCELES INVESTMENTS**

Mining | Exploration | Consultancy | Sourcing | Energy

“we will fight to eradicate poverty. This can be done, but to achieve this we need to work together.”



ISOSCELES INVESTMENTS  
Mining | Exploration | Consultancy | Sourcing | Energy

# POVERTY

From inception, our core founding values and purpose remains the same. Our strength is driven from the foundation of building people. We are people centric and life comes first. Isosceles Investments' long term vision is centred on helping improve Health, Education, Poverty Eradication, Work and Livelihood Support, Environment and Green Energy (Renewable Energy). Anything is possible. Poverty is in some of the hard to reach places in the world, the most fragile and unstable communities, especially in Africa. We promise to play a role to support eradicate poverty and send children to school. Things are getting tougher for people everyday. Poverty is mutating, it's fighting a war and if we do not step up we will not win.

Our strategy is a promise to vulnerable children, orphans and families. The Isosceles Investments' promise is to commit to teach families how to fend for themselves (a famous saying goes, "teach a man how to fish than put food in his plate"). We will also send children to school, get medicines for the sick, put warm cloths on a child, get a kid off the streets, help the girl child, help provide clean source of drinking water for communities, teach someone to do good for the next person so that the chain goes on. We also would continue to help protect the environment and live it in a state that the feature generations will appreciate. We should leave the environment in a state we would want to find it in if we were the feature generation. Good stewardship. For us to attain our vision as a company, there are first steps that need to be carried out. We cannot do this alone. It is a common goal. We need to partner and work together with NGOs, Companies and Governments that are like minded to achieve this Corporate Social Responsibility (CSR). The work starts now, the journey ahead might have obstacles but it can be achieved.



“we deliver to our promise”



**ISOSCELES INVESTMENTS**  
Mining | Exploration | Consultancy | Sourcing | Energy



No 33 Alexander Road, Highlands, Harare, Zimbabwe  
E-mail: [info@isoscelesinvestments.com](mailto:info@isoscelesinvestments.com), Tel: +263 772 936 409,  
[www.isoscelesinvestments.com](http://www.isoscelesinvestments.com),